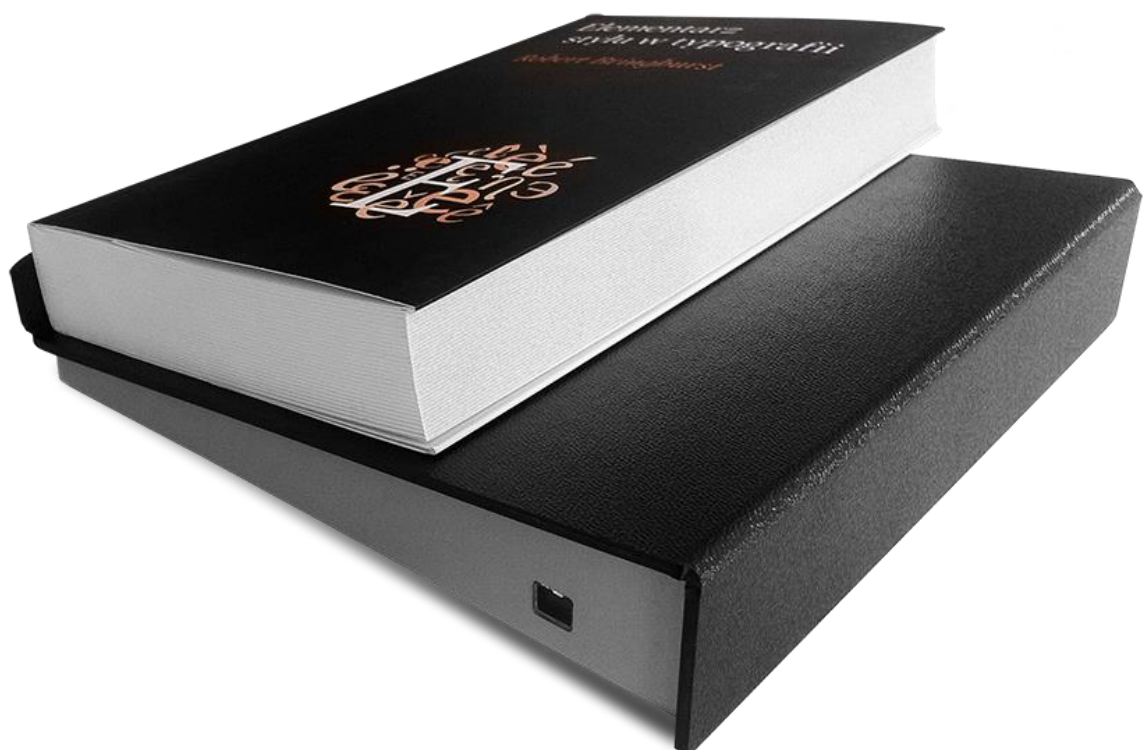


RFID HF Staff workplace Eco

Tags coding,
Borrowing, renewing, returning items



The RFID HF Staff workplace enables to code tags (convert identifiers of the items from barcode to RFID) to borrow, renew and return items with RFID UHF tags. The device can be installed on the table of the staff workplace. The antenna and the reader is one integral unit and it is connected with the staff computer via USB port. Communication with The Library Management System is done via USB.



The workplace consists of:

- reader-converter RFID tags integrated with antenna,
- software,
- USB 2.0.

The Staff workplace enables to convert identifiers of items from barcode to RFID, to borrow, renew, return items with RFID HF tag.

The unit communicates in real time with Library Management System.

The workplace software deactivates tag when borrowing an item, activate the tag when returning an item. Borrowing, renewal and return is recorded in real-time in the Library Management System.

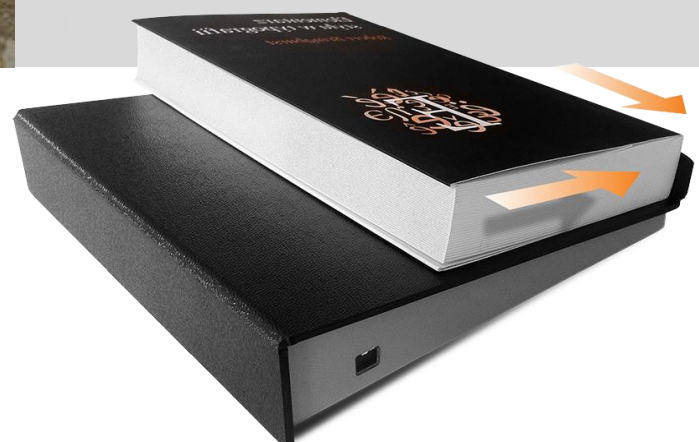
The tag status is displayed on the screen of the staff workplace (active or not).

The information about connection with LMS, RFID reader/writer, label printer and barcode scanner is shown on display. The employees are informed about this connections.



Technical specification:

- The device ensures stable arrangement of the book A4 format,
- External dimension: length. 220 mm x width 205 mm x height 40 mm,
- radiated power 170 mW ,
- configured frequency 13,56 MHz,
- communication USB 2.0.
- power 5V from USB,
- radio certificate EN 302 208,
- weight: approx. 0,5 kg,



Arfido Sp. z o.o.

ul. Szkolna 10A, 62-081 Chyby, Poland
arfido@arfido.com | www.arfido.com